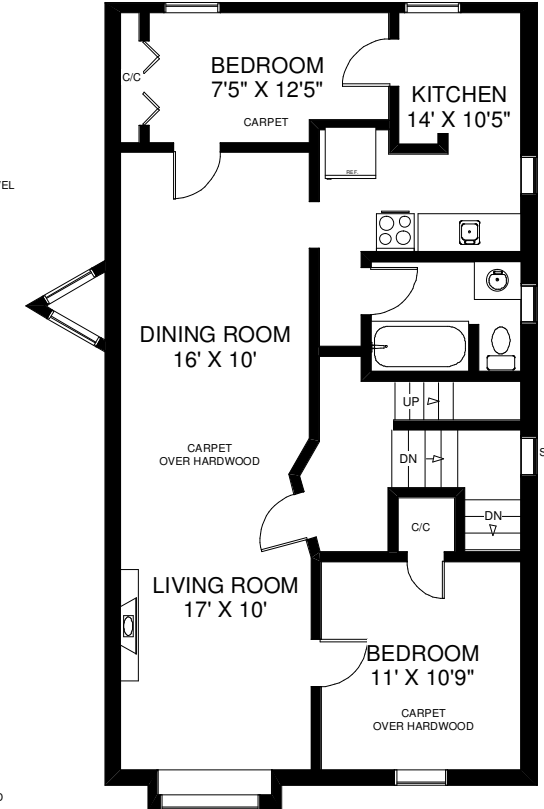
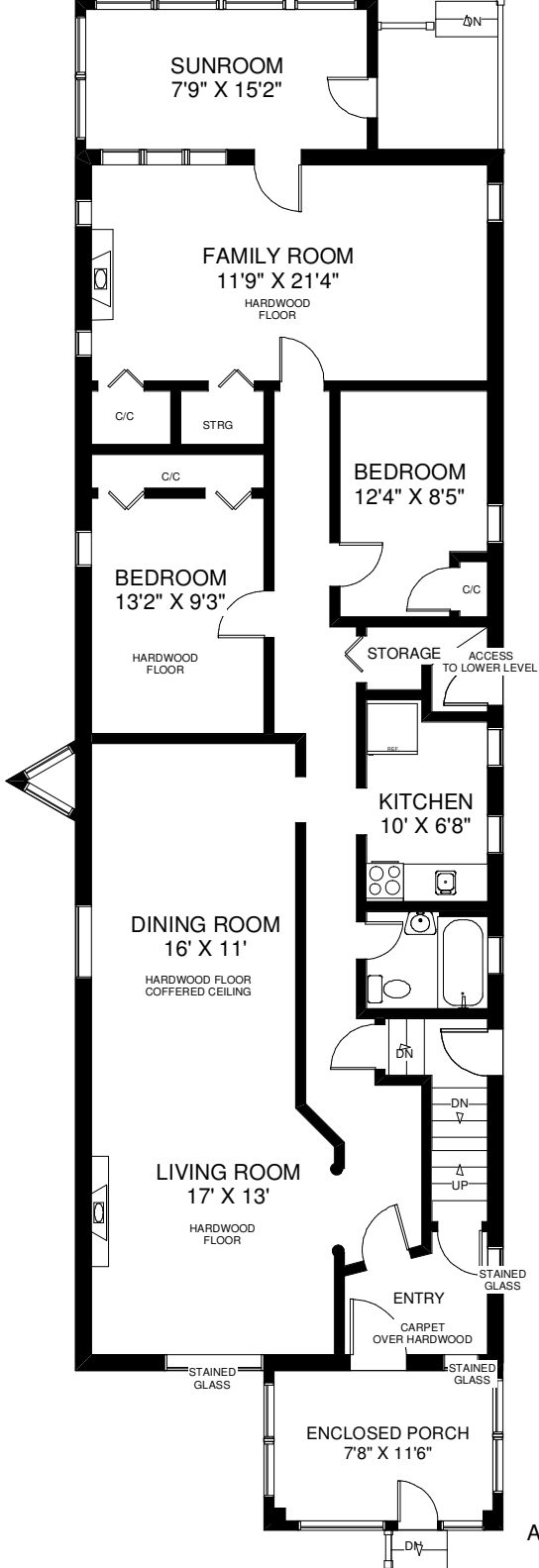
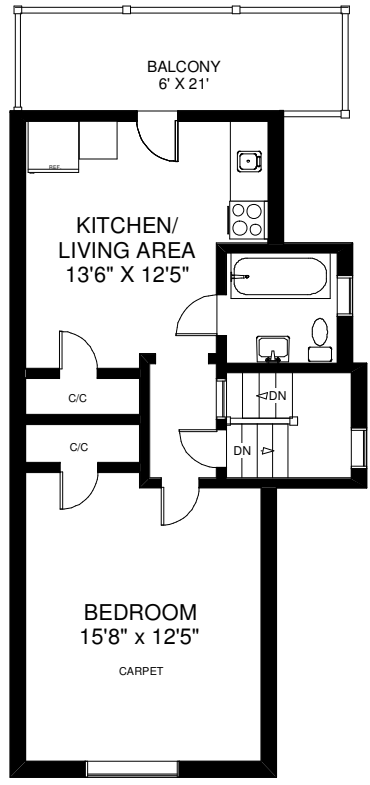


# 211 PEARSON AVENUE

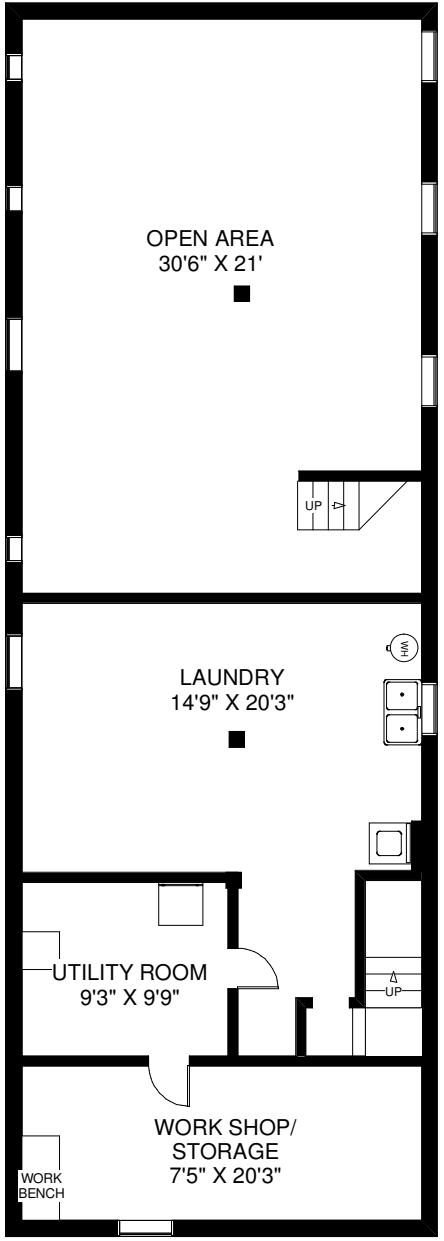
**THE JULIE KINNEAR TEAM**  
**Sales Representatives**  
**Keller Williams Neighbourhood Realty**  
**(416) 236-1392**



**SECOND FLOOR**  
 APPROXIMATELY 970 SQ FT



**THIRD FLOOR**  
 APPROXIMATELY 560 SQ FT



**LOWER FLOOR**  
 APPROXIMATELY 1,500 SQ FT

**MAIN FLOOR**  
 APPROXIMATELY 1,630 SQ FT

Note: Measurements & Calculations are approximate. Provided as a guideline only.