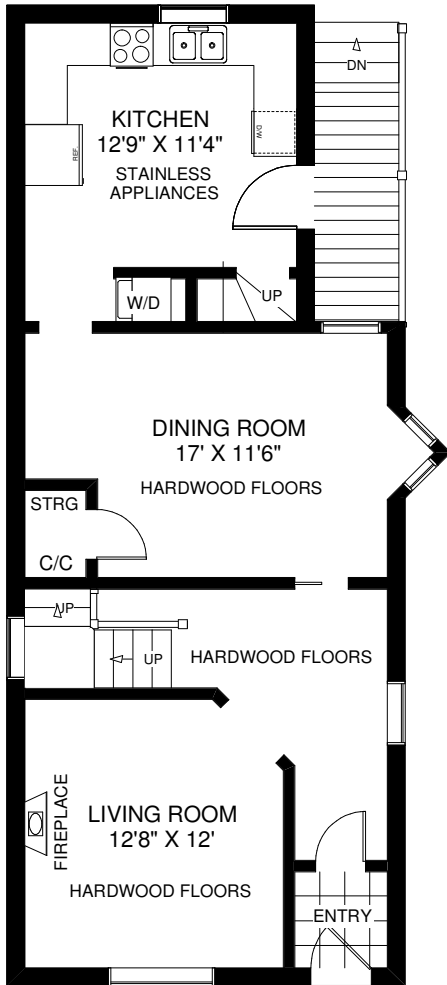
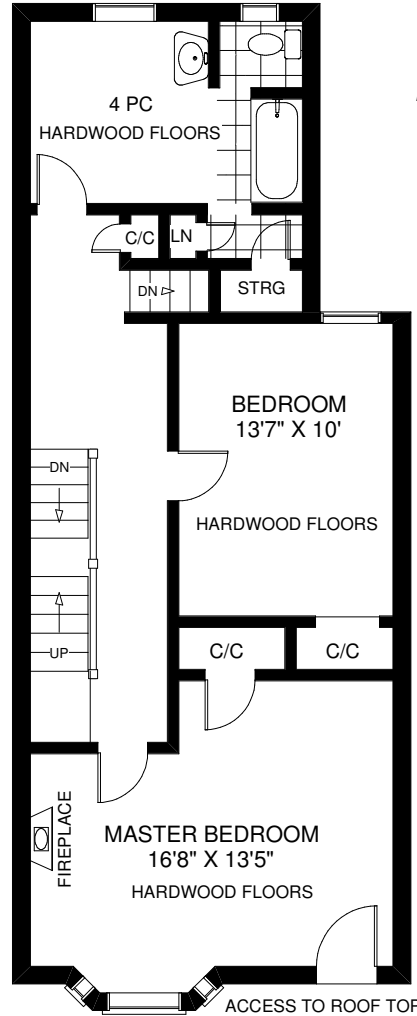


# 50 PEARSON AVENUE

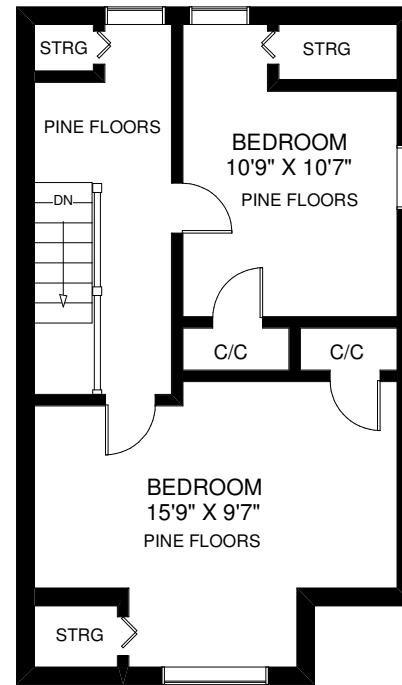
**THE JULIE KINNEAR TEAM**  
**Royal LePage Real Estate Services**  
**Ltd., Brokerage**  
**(416) 762-8255**



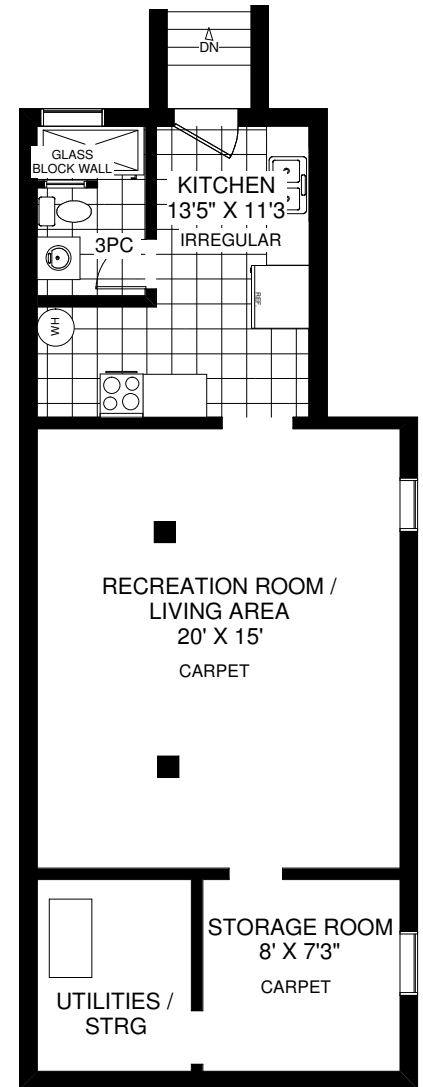
**MAIN FLOOR**  
 APPROXIMATELY 809 SQ FT



**SECOND FLOOR**  
 APPROXIMATELY 809 SQ FT



**THIRD FLOOR**  
 APPROXIMATELY 569 SQ FT



**LOWER FLOOR**  
 APPROXIMATELY 809 SQ FT

**FLOOR PLANS BY KIM DORNEY**  
 647-989-6526

Note: Measurements & Calculations are approximate. Provided as a guideline only.